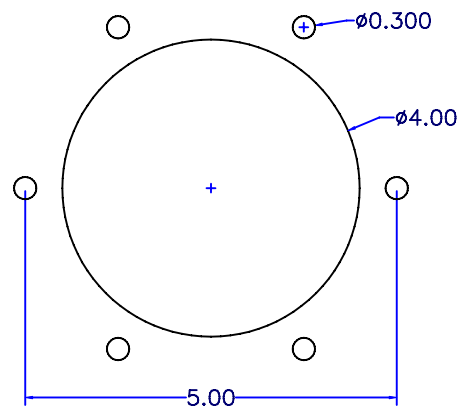


DUCT WALL DRILLED HOLES



INSTALLATION
 Install Backup nut onto SEC3000 threads, As far as it will go
 Install SEC3000 Through Mounting Plate, Install O-ring over threads
 Thread J-Box onto SEC3000 threads from other side of Plate and tighten until Assy is Tight
 From inside Duct, Install Brackets, Studs come through 0.3" Holes
 Install Gasket and SEC3000/Plate assy over studs
 Install (6) nuts on studs and tighten

| | | | |
|-----|----------|-------|------|
| △ | | | |
| △ | RELEASED | PGS | 6/14 |
| NO. | | TP | 04 |
| | | BY | DATE |
| | | CHKD. | |

SENSOR ELECTRONICS CORPORATION

SENSOR ELECTRONICS CORP.
 5500 LINCOLN DRIVE
 MINNEAPOLIS, MINNESOTA
 55436

| | | |
|------------|------------|--------------|
| SCALE: 1:1 | DESIGN BY: | REVISED BY: |
| DATE: | DRAWN BY: | APPROVED BY: |

Duct Mount Adapter Installation, SEC3000

| | | |
|---------|-------------|-------------|
| SIZE: B | DRAWING NO. | REVISION: A |
|---------|-------------|-------------|